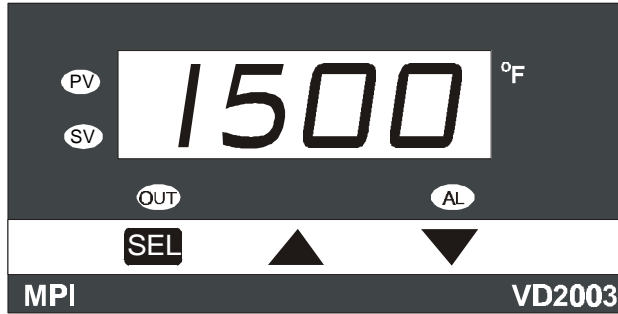
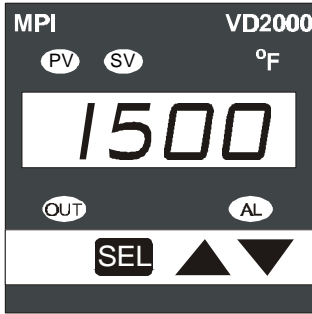




TEMPERATURE INDICATOR / CONTROL

VD SERIES



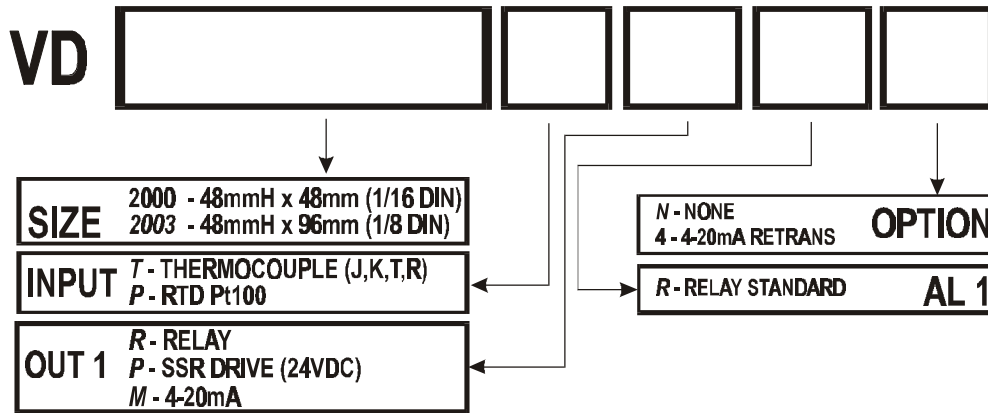
STANDARD

P CONTROL
 ULC, UL, CE pending
 6 SECURITY OPTIONS
 PROGRAMMABLE
 T/C or RTD INPUT
 CONFIGURABLE ALARM

OPTIONS

RETRANS OUTPUT

MODEL CODE



SPECIFICATIONS

1. INPUT

*Thermocouple J, K, T, R
 *RTD Pt100 ohms RTD (DIN 43760/BS 1904 or JIS)
 *Range User configurable
 *Accuracy +/-2C for T/C, _+0.2C for RTD, _+0.05% for Linear input.
 *Cold Junction Comp 0.1% ambient typical.
 *Input Impedance 10M ohms for T/C, 100K ohms for Linear Voltage, 2.7 Ohms for 0 (4)- 20 mA/
 *Excitation Current for RTD 0.2mA Max.
 *Sample Rate 250mS

2. CONTROL

*Proportional Band 0.0-300.0%
 *On-Off With adjustable hysteresis
 *Cycle Time 0-60 seconds.
 *Control Action Configurable for Direct (cooling) or Reverse (Heating)

3. OUTPUT

*Relay 5A/240VAC resistive.
 *Pulsed Voltage Isolated 24 VDC 100mA Max.
 *Current Isolated 0 (4) - 20 mA Max load 500 ohms.
 *Alarm Relay output, (SPST) 10A/240VAC resistive.

4. RETRANSMISSION of SETPOINT

*Current Isolated 0 (4) - 20 mA Max load 500 ohms.

5. POWER

*Rating 85 - 265 VAC 50/60Hz 5VA max

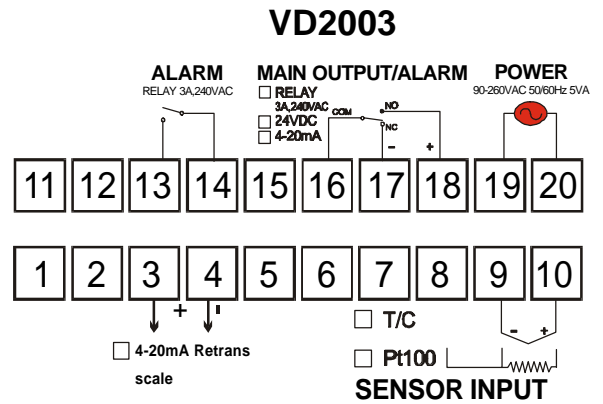
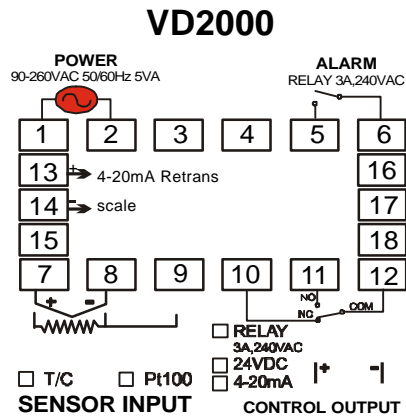
6. ENVIRONMENTAL

*Operating Temp -10 - 50C
 *Humidity - 90%
 *Insulation 20M ohms minimum @ 500VDC
 *EMC Emission EN500081-1:1992, EN55022:1994
 *EMC Immunity EN 50082-1:1992, IEC 801-3, IEC 801-4:1988
 *Weight VD2000 180g, VD2003 - 240g

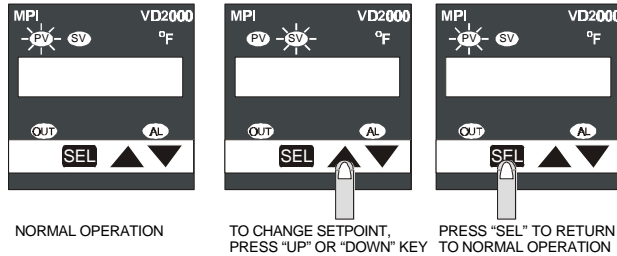
7. PHYSICAL DIMENSIONS

*VD2000 48mmW x 48mmH x 100mmD
 *VD2000 Cutout 45mmW x 45mmH +/-0.5mm
 *VD2003 96mmW x 48mmH x 80mmD
 *VD2003 Cutout 91mmW x 45mmH +/-0.5mm

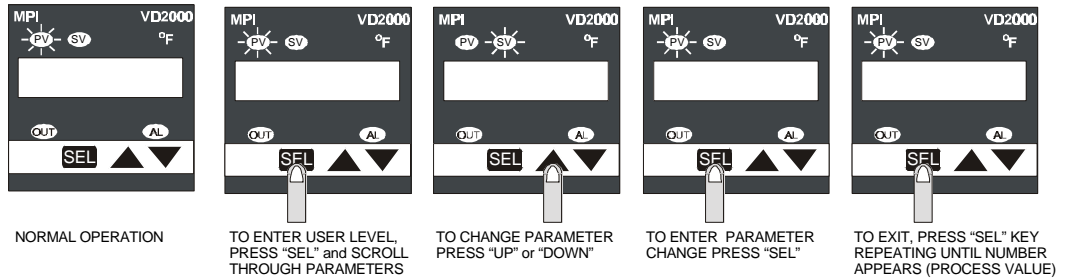
TERMINAL CONFIGURATION



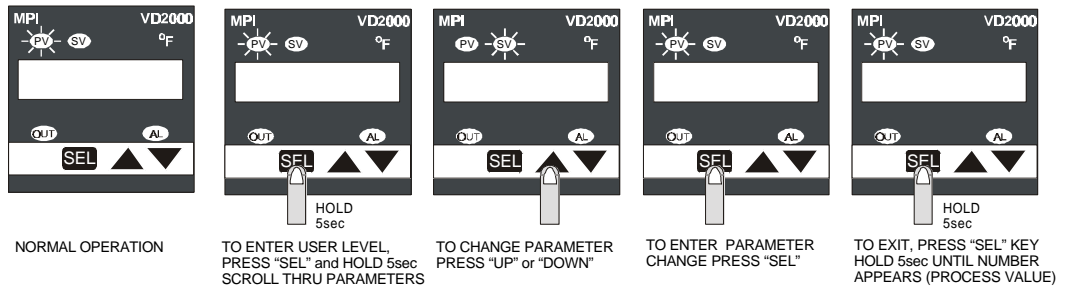
CHANGING SETPOINT



ENTER USER LEVEL



ENTER OPTION LEVEL



ENTER LOCK LEVEL

