

# BIMETAL THERMOMETER



**Features:**

- 1", 2" dials, back connection
- 3" and 5" dials, back, bottom or Adjustable
- Stainless steel case and stem
- Recalibrator-reset screw
- Hermetically sealed construction
- 1/4" NPT connection standard on 2" dial
- 1/2" NPT connection standard on 3" & 5" dials

**Applications:**

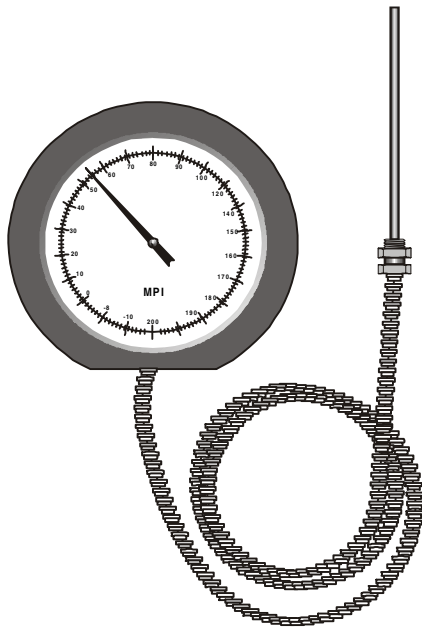
- All types of industrial applications
- Where vibrations exists liquid fill dampens the pointer movement.
- An acrylic lens is available for food applications.

## ORDER CODE

DIAL SIZE	STEM LENGTH	PRODUCT # FIXED CENTRE BACK	BOTTOM	VARI_ANGLE
1" (POCKET THERMOMETER)	5"	10050	N/A	N/A
2" (LAB THERMOMETER)	8"	20080	N/A	N/A
2"	2.5"	20025	N/A	N/A
	4"	20040	N/A	N/A
	6"	20060	N/A	N/A
	9"	20090	N/A	N/A
3"	12"	20120	N/A	N/A
	2.5"	30025	31025	32025
	4"	30040	31040	32040
	6"	30060	31060	32060
5"	9"	30090	31090	32090
	12"	30120	31120	32120
	2.5"	50025	51025	52025
	4"	50040	51040	52040
5"	6"	50060	51060	52060
	9"	50090	51090	52090
	12"	50120	51120	52120

F & C		CODE #	F ONLY	CODE #	C ONLY	CODE #
-100/150 °F/	-70/70 °C	B1	-40/120 °F/	B14	-100/50 °C	B26
-40/120 °F/	-40/50 °C	B2	-40/160 °F/	B15	-50/50 °C	B27
0/140 °F/	-20/60 °C	B3	0/140 °F/	B16	0/50 °C	B28
-40/160 °F/	-40/70 °C	B4**	0/200 °F/	B17	-50/100 °C	B29
24/125 °F/	-5/50 °C	B5**	20/240 °F/	B18	0/100 °C	B30
0/200 °F/	-20/90 °C	B6	0/250 °F/	B19	-20/120 °C	B31
20/240 °F/	-5/115 °C	B7	50/300 °F/	B20	0/150 °C	B32
0/250 °F/	-20/120 °C	B8	50/400 °F/	B21	0/200 °C	B33
50/300 °F/	10/150 °C	B9	50/550 °F/	B22	0/300 °C	B34
50/400 °F/	10/200 °C	B10	150/750 °F/	B23	0/450 °C	B35
50/500 °F/	10/260 °C	B11	0/800 °F/	B24	100/550 °C	B36
150/750 °F/	100/400 °C	B12	200/1000 °F/	B25		
200/1000 °F/	100/540 °C	B13				

# REMOTE READING THERMOMETER



**FEATURES:**

- 3 1/2", 4 1/2", 6", 8" dials
- Other dial size available
- 1/2% accuracy gas actuated
- 3% accuracy vapour actuated
- Brass or stainless steel capillary
- Numerous options: armour, duct flanges, compensated capillary, longer bulbs etc.

**APPLICATIONS:**

Industrial applications where a remote indication is preferable. \* Remote readings from direct

**SECTION I  
PRODUCT CODE**

- TYPE 1**
- 1 Gas remote reading
  - 2 Gas direct reading
  - 3 Vapour remote reading
  - 4 Vapour direct reading
  - 5 Mercury remote reading
  - 6 Mercury direct reading

- CASE TYPE, CONNECTION**
- 1 Bottom connection, back flange
  - 2 Back connection, front flange
  - 3 Back connection, back flange
  - 4 Vari-angle connection

- DIAL SIZE**
- 3 3 1/2"
  - 4 4 1/2"
  - 6 6"
  - 8 8"

**BULB AND CAPILLARY**

	BULB TYPE	BULB MATERIAL	CAPILLARY MATERIAL	CAPILLARY PROTECTION
1	Plain	Brass	Copper	Copper Braid
2	Plain	304 st/st	316 st/st	None
3	Plain	304 st/st	316 st/st	Stainless steel armour

- CAPILLARY LENGTH**
- 05 Standard, 5 feet
  - Use 2 digits ie: 15 = 15 feet

- CONNECTION**
- 0 None
  - 1 1/2" npt brass union
  - 2 1/2" st/st union
  - 3 3/4" brass union
  - 4 3/4" st/st union
  - 5 1/2" brass thermowell
  - 6 1/2" st/st thermowell
  - 7 3/4" brass thermowell
  - 8 3/4" st/st thermowell