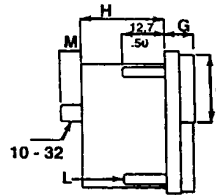
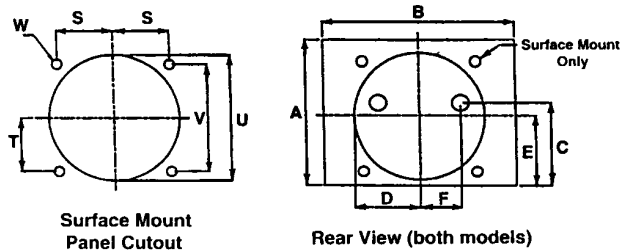


ANALOG PANEL METER

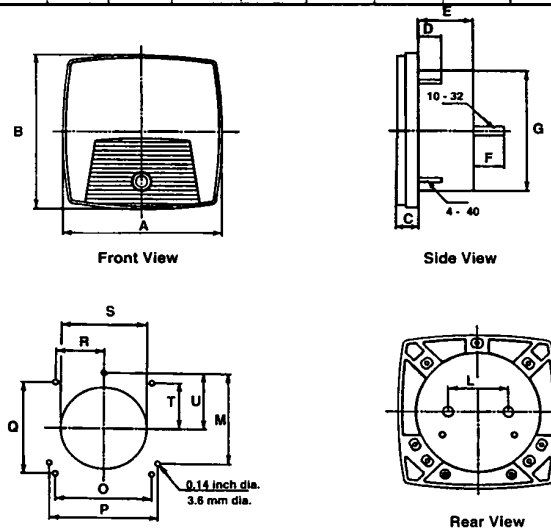
SURFACE MOUNT



Surface Mount Side View

		A	B	C	D	E	F	G	H	J	L	M	S	T	U	V	W
1"	m.m.	44.5	58.9	25.1	19.3	21.1	12.2	8.6	33.0	22.1		6.4	16.8	16.8	39.4	33.3	3.2
	in.	1.75	2.24	0.99	0.76	0.83	0.48	0.34	1.30	0.87	4-40	0.25	0.66	0.66	1.55	1.31	0.125
2"	m.m.	57.7	75.9	33.8	27.2	28.7	14.2	10.2	33.0	31.5		12.7	23.9	23.9	56.4	47.8	3.2
	in.	2.27	2.99	1.33	1.07	1.13	0.56	0.40	1.30	1.24	4-40	0.50	0.94	0.94	2.22	1.88	0.125
3"	m.m.	72.9	94.0	36.6	33.8	36.6	14.2	10.4	33.0	39.4		12.7	28.4	28.4	71.6	57.2	3.2
	in.	2.87	3.70	1.44	1.33	1.44	0.56	0.41	1.30	1.55	4-40	0.50	1.12	1.12	2.82	2.25	0.125
4"	m.m.	100.6	129.5	44.2	33.8	44.2	14.2	12.9	33.0	55.9		12.7	50.8	39.1	71.6	90.4	3.8
	in.	3.96	5.10	1.74	1.33	1.74	0.56	0.51	1.30	2.20	6-32	0.50	2.00	1.54	2.82	3.56	0.15
5"	m.m.	113.8	148.6	41.9	33.8	41.9	14.2	14.0	33.0	63.5		12.7	66.8	21.6	71.6	76.2	3.8
	in.	4.48	5.85	1.65	1.33	1.65	0.56	0.55	1.30	2.50	6-32	0.50	2.63	0.85	2.82	3.00	0.15

PANEL BOARD MOUNT



Panel Cutout

		A	B	C	D	E	F	G	L	M	O	P	Q	R	S	T	U
1"	m.m.	44.7	44.7	12.7	12.7	24.4	9.7	38.1	19.0		33.3		33.3	16.7	38.8	16.7	
	in.	1.76	1.76	0.50	0.50	0.95	0.38	1.5	0.75		1.312		1.312	0.656	1.53	0.656	
2"	m.m.	68.3	68.3	12.7	12.7	30.0	17.0	54.6	33.47	46.5	47.5	53.6	47.5	23.75	55.1	23.75	31.0
	in.	2.69	2.69	0.50	0.50	1.18	0.67	2.15	1.318	1.829	1.87	2.112	1.87	0.935	2.17	0.935	1.219
3"	m.m.	88.9	88.9	12.7	12.7	30.7	17.0	68.6	33.47	60.27	57.0	69.6	57.0	28.5	69.1	28.5	40.2
	in.	3.50	3.50	0.50	0.50	1.21	0.67	2.70	1.318	2.373	2.244	2.74	2.244	1.122	2.72	1.122	1.582
4"	m.m.	123.2	112.0	12.7	12.7	30.7	17.0	68.6	33.47		101.6		90.47	50.8	69.1	51.58	
	in.	4.85	4.41	0.50	0.50	1.21	0.67	2.70	1.318		4.00		3.562	2.00	2.72	2.031	

ORDERING GUIDE FOR STANDARD CATALOG METER

SELECTING AN ANALOG PANEL METER

This catalog has been arranged to assist our customers in selecting the proper analog panel meter and its corresponding part number.

FIRST: Select the mechanical requirements to meet your application (Style, Size, Type of Mechanism and Pointer Position). CODES 1 through 4.

SECOND: Determine if a Standard Range and Scale (CODE 5 & 6) will meet your electrical input signal application.

THIRD: If you require an OPTION or ACCESSORY add the appropriate CODE (9) after Code (6).

FOURTH: If you require a custom input and scale complete CODES 1 through 4 and then define your input type and range (CODES 5 & 6). Next determine the Nomenclature (CODE 7) and Scale range (CODE 8).

If the Scale Nomenclature, Scale Numbers and range is not listed in the Tables under CODE 7 & 8, or you require other special requirements contact the factory and a special part number will be assigned to enable you to reorder and receive the exact product.

SELECT CODE FOR:

- | | |
|--------------------------|---------------------------------|
| 1. METER STYLE | 4. POINTER POSITION |
| 2. METER SIZE | 5. INPUT SIGNAL |
| 3. METER MOVEMENT | 6. INPUT RANGE AND SCALE |

1. METER STYLE		2. METER SIZE		3. METER MOVEMENT		4. POINTER POSITION		5. INPUT SIGNAL		6. INPUT RANGE AND SCALE (WHEN IDENTICAL)					
SURFACE	S	1.5"	1	PIVOT & JEWEL	P	ZERO LEFT	L	AC MICROAMPERS	UAA	.5	AA	16	GG	300	S
WINDOW	W	2.5"	2	TAUT BAND	T	ZERO CENTER	C	AC MILLIAMPERES	MAA	1	A	20	H	350-450	SL
PANELBOARD	P	3.5"	3	IRON VANE	I	ZERO RIGHT	R	AC AMPERES	AAA	1.2	AC	24-32	HX	380-420	SP
		4.5"	4					AC VOLTS	VVA	1.5	AF	25	I	400	T
		5.5"	5					DC MICROAMPERS	UAD	1.6	AH	30	J	500	U
								DC MILLIAMPERES	MAD	1.8	AM	32-48	JX	600	V
								DC AMPERES	DAA	1-5	AX	40	K	750	W
								DC MILLIVOLTS	MVD	2	B	45-55	KD	800	X
								DC VOLTS	VVD	2.5	BF	45-55	KL	1000	Z
								ELAPSED TIME	ETM	3	C	48-52	KP	1200	ZC
								FREQUENCY	HTZ	4	CC	50	L	1400	ZF
										4-20	CX	50-70	LD	1500	ZH
										5	D	55-85	LL	1600	ZL
										6	DG	58-82	LP	1800	ZM
										7	DL	60	LT	2000	ZN
										7.5	DN	75	M	2500	ZO
										8	E	80	N	3000	ZP
										8-16	EX	100	O	4000	ZQ
										9	EY	120	OG	5000	ZR
										10	F	150	P	5250	ZS
										10-50	FD	200	Q	6000	ZT
										12	FN	208	QC	7500	ZU
										12-24	FX	240	QL	8000	ZV
										15	G	250	R	10000	ZZ

EXAMPLE:

SURFACE MOUNT METER (S), SIZE 3 1/2 INCHES (3), WITH A PIVOT AND JEWEL MECHANISM (P), POINTER POSITION ON LEFT HAND SIDE (L), WITH A DC VOLTAGE INPUT (VVD), AND A SCALE TO MATCH THE INPUT OF 0-75 VDC (M)

Part Number would be : "S3PLVVDM"

OPTIONS AND ACCESSORIES:

If you are ordering a Standard Meter and require an OPTION or ACCESSORY add the CODE from Table (9) after the Part Number CODE (6).