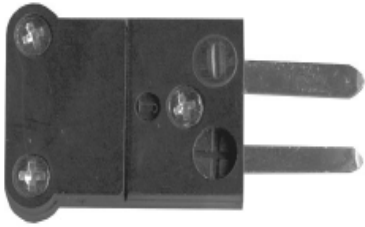


# CONNECTORS

# TEMPERATURE SENSORS

## PLUG



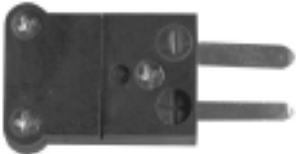
TEMP	J	K	T
150°C	H10J	H10K	H10T
300°C	H10JB	H10KB	H10TB
600°C	H10JC	H10KC	H10TC

## JACK



TEMP	J	K	T
150°C	H20J	H20K	H20T
300°C	H20JB	H20KB	H20TB
600°C	H20JC	H20KC	H20TC

## MINIATURE PLUG



TEMP	J	K	T
150°C	H110J	H110K	H110T
300°C	H110JB	H110KB	H110TB
600°C	H110JC	H110KC	H110TC

## MINIATURE JACK



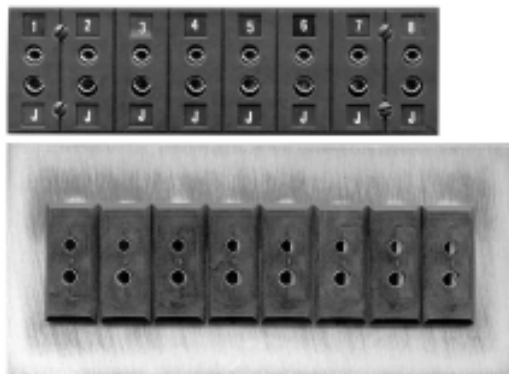
TEMP	J	K	T
150°C	H120J	H120K	H120T
300°C	H120JB	H120KB	H120TB
600°C	H120JC	H120KC	H120TC

## SINGLE PANEL JACK



PART#	SENSOR
H32J	J
H32K	K
H32T	T

## MULTIPLE PANEL JACK



#CIRCUITS	A(in.)
2	1.50
3	2.25
4	3.00
5	3.75
6	4.50
7	5.25
8	6.00
9	7.75
10	7.50

H1032 —  —  —

TYPE	CIRCUITS	ORIENTATION
J	2	S - STANDARD
K	3	M - MOLDED
T	12	
RTD		

**COMPRESSION FITTINGS**

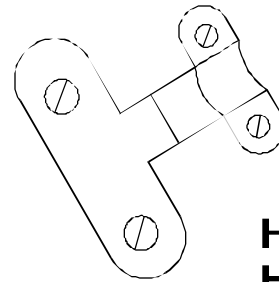


CF - □ - □ - □

1 2 3

MATERIAL	INSIDE DIA	THREAD
B-BRASS	1- 1/8"	1-1/8" NPT
S-STAINLESS	2- 3/16"	2-1/4" NPT
	3- 1/4"	3-3/8" NPT
		4-1/2" NPT

**THERMOCOUPLE PLUG CABLE CLAMPS**



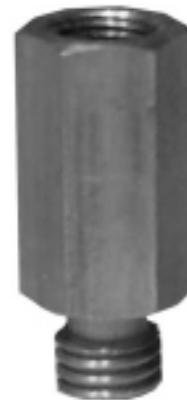
**H40** - STANDARD CONNECTOR  
**H140** - MINIATURE CONNECTOR

**BAYONET ADAPTORS**



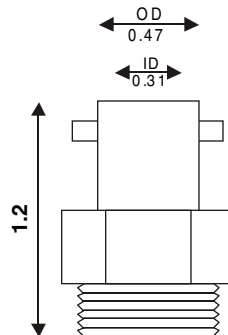
	A	THREAD
BA-1	7/8"	1/8"-27 NPT
BA-2	7/8"	3/8"-24 NF
BA-3	1-1/2"	1/8"-27 NPT
BA-4	1-1/2"	3/8"-24 NF
BA-5	2-1/2"	1/8"-27 NPT
BA-6	2-1/2"	3/8"-24 NF
BA-7	3-1/2"	1/8"-27 NPT
BA-8	3-1/2"	3/8"-24 NF

**METRIC ADAPTORS**

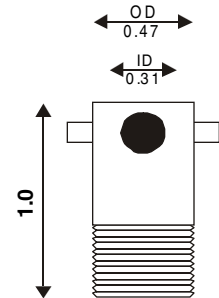


PART NUMBER	METRIC THREAD
HMEA - A -1	10 x 1.5 mm
HMEA - B -1	12 x 1 mm
HMEA - C -1	12 x 1.5 mm
HMEA - D -1	14 x 1.5 mm
HMEA - E -1	14 x 2 mm

**METRIC BAYONET ADAPTORS**



**PART# - THREAD**  
 BA-M14x1.5  
 BA-M17x1.4



**PART# - THREAD**  
 BA-M12x1.0  
 BA-M12x1.5  
 BA-M12x1.75