

# TEMPERATURE TRANSMITTER HEAD MOUNT



**STANDARD**

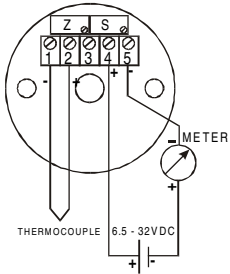
**INPUT** - THERMOCOUPLE J, K, T, N  
 - PT100  
**OUTPUT** - 4-20mA  
**0.1% ACCURACY**  
**ZERO & SPAN POTENTIOMETERS**  
**FITS STANDARD T/C HEAD**  
**LOW PROFILE - 0.67" (17mm)**

**OPTION**

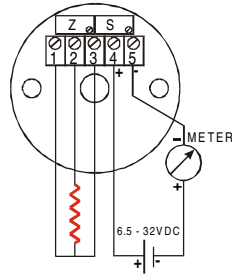
**INTRINSICALLY SAFE**  
**FM APPROVAL**  
**CENELEC APPROVAL**

SENSOR	SPAN RANGE (°F)	SPAN RANGE (°C)
T/C - J	335-1566°F	186-870°C
T/C - K	443-2218°F	246-1232°C
T/C - T	383-720°F	213-400°C
T/C - N	574-2340°F	574-1300°C
Pt100	100-1000°F	50-500°C
ZERO RANGE	-60 to +120°F	-50 to +50°C

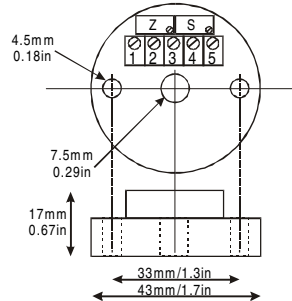
**THERMOCOUPLE  
ELECTRICAL  
CONNECTION**



**Pt100 RTD SENSOR  
ELECTRICAL  
CONNECTION**



**DIMENSIONAL  
DRAWING**



**MODEL CODE**

**MPTR - [INPUT] - [SCALE] - [ERROR] - [RATING]**  
 J K T N Pt100  
 ie. 0-500°F U - UP (25mA) L - DOWN(3mA)  
 N - NONE I - INTRINSIC SAFE FM - Class 1, Div.1 Gr.A-D

**SPECIFICATIONS - MPTR**

**1. INPUT**

Thermocouple J, K, T, N  
 RTD Pt100 ohms RTD (DIN / JIS)  
 Range 10-50mV  
 Accuracy 0.1% of SPAN  
 CJC Comp Temp Influence +/-0.6% / 25°C  
 Zero Range -50 to +50°C

**3. ENVIRONMENTAL**

Operating Temp. -40 - 85°C / -40 - 185°F  
 Humidity 0 - 95% non Condensing  
 Rating IP20  
 Weight 40g

**2. OUTPUT**

Output 4-20mA  
 Temp Stability +/-0.7% of SPAN / 25oC (50oF)  
 Response (10-90%) <0.2s  
 Long Term Stability 0.1% / YR  
 Permissible Load 620ohm @ 24VDC  
 Sensor Break Action High(25mA) or Low(3mA)

**4. POWER**

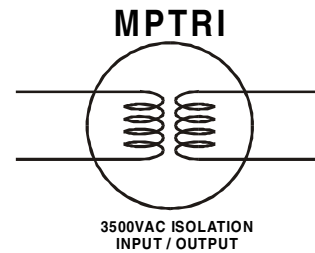
Rating 6.5 - 32VDC

# ISOLATED TEMPERATURE TRANSMITTER HEAD MOUNT

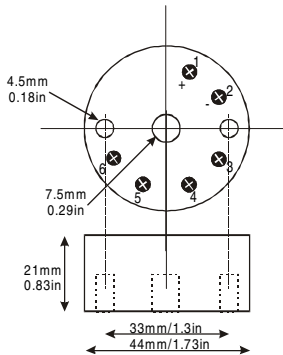


**STANDARD**

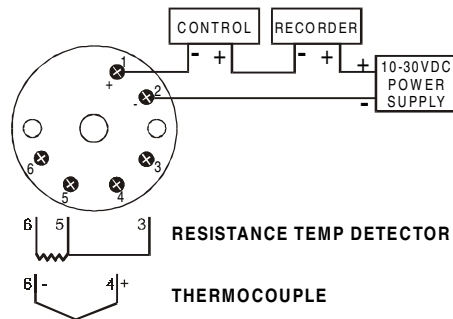
- INPUT**
- THERMOCOUPLE J, K, T, E, S, R, N
  - PT100, PT500, PT1000, Ni100, Ni500
  - CUSTOM INPUT 40 POINT LINEARIZE
- OUTPUT** - 4-20mA or 20-4mA
- 0.05% ACCURACY**
- FITS STANDARD T/C HEAD**
- ISOLATION - 3500VAC INPUT / OUTPUT**
- SMALL SPAN CAPABILITY - 10°C**



**DIMENTIONAL DRAWING**



**ELECTRICAL CONNECTION**



**MODEL CODE**

MPTRI -	<b>INPUT</b>	-	<b>SCALE</b>	-	<b>ERROR</b>
	J		ie. 0-500°F		U - UP (25mA)
	K				L - DOWN(3mA)
	T				
	E				
	S	Pt100			
	R	Pt1000			
	N	OTHER			

**SPECIFICATIONS - MPTRI**

**1. INPUT**

Thermocouple	J, K, T, E, R, S, N
RTD	Pt100, Pt500, Pt1000, Ni100, Ni500, Ni1000
mV	CUSTOM RANGES
Range	Full Sensor Ranges
Accuracy	0.05% of SPAN
CJC Comp Accuracy	+/-1°C
Zero Range	-50 to +50°C

**3. ENVIRONMENTAL**

Operating Temp.	-40 - 85°C / -40 - 185°F
Humidity	0 - 95% non Condensing
Rating	IP54 - IN HEAD
Weight	40g

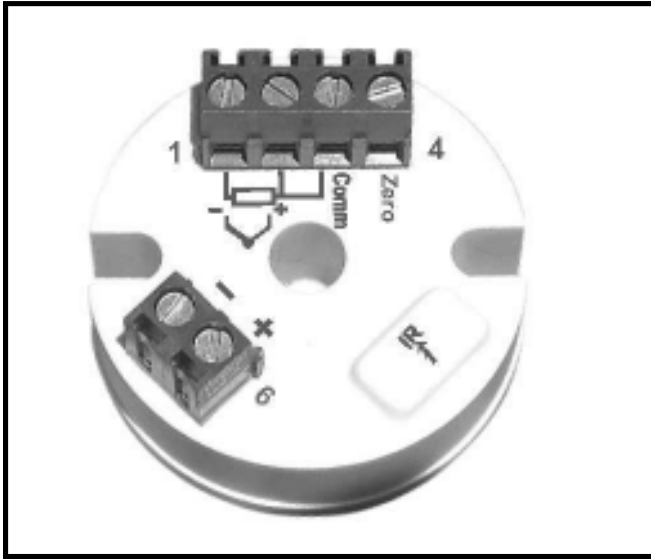
**2. OUTPUT**

Output	4-20mA or 20-4mA
Temp Stability	+/-0.005% / oC
Response (10-90%)	<0.2s
Long Term Stability	0.1% / YR
Permissible Load	620ohm @ 24VDC
Sensor Break Action	High(25mA) or Low(3mA)
Isolation	3500VAC INPUT/OUTPUT

**4. POWER**

Rating	8 - 35VDC
--------	-----------

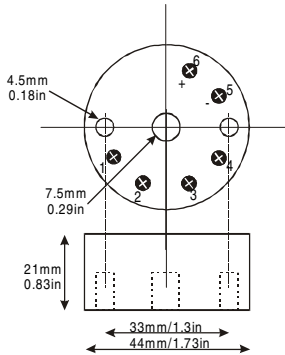
# PC PROGRAM TEMPERATURE TRANSMITTER HEAD MOUNT



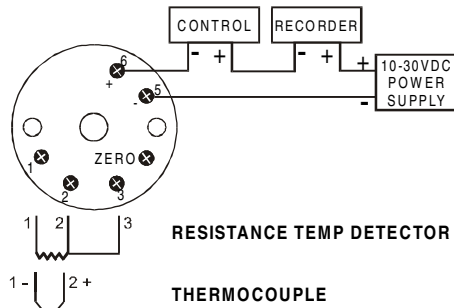
**STANDARD**

- INPUT**
- THERMOCOUPLE J, K, T, E, S, R, N
  - PT100, PT500, PT1000, Ni100, Ni500
  - CUSTOM INPUT 40 POINT LINEARIZE
- OUTPUT**
- 4-20mA or 20-4mA
- 0.05% ACCURACY**  
**FITS STANDARD T/C HEAD**  
**non isolated**  
**SMALL SPAN CAPABILITY - 50°C**  
**PC PROGRAMMABLE WITH Rs232 PORT**

**DIMENTIONAL DRAWING**



**ELECTRICAL CONNECTION**



**MODEL CODE**

MPTRP -	<b>INPUT</b>	-	<b>SCALE</b>	-	<b>ERROR</b>
	J		ie. 0-500°F		U - UP (25mA)
	K				L - DOWN(3mA)
	T				
	E				
	S	Pt100			
	R	Pt1000			
	N	OTHER			

**SPECIFICATIONS - MPTRP**

**1. INPUT**

Thermocouple	J, K, T, E, R, S, N
RTD	Pt100, Pt500, Pt1000, Ni100, Ni500, Ni1000
mV	CUSTOM RANGES
Range	Full Sensor Ranges
Accuracy	0.05% of SPAN
CJC Comp Accuracy	+/-1°C
Zero Range	-50 to +50°C

**2. OUTPUT**

Output	4-20mA or 20-4mA
Temp Stability	+/-0.01% / °C
Response (10-90%)	<0.2s
Long Term Stability	0.1% / YR
Permissible Load	620ohm @ 24VDC
Sensor Break Action	High(25mA) or Low(3mA)

**3. ENVIRONMENTAL**

Operating Temp.	-40 - 85°C / -40 - 185°F
Humidity	0 - 95% non Condensing
Weight	30g

**4. POWER**

Rating	8 - 35VDC
--------	-----------