

HUMIDITY / TEMPERATURE TRANSMITTER - WALL MOUNT -



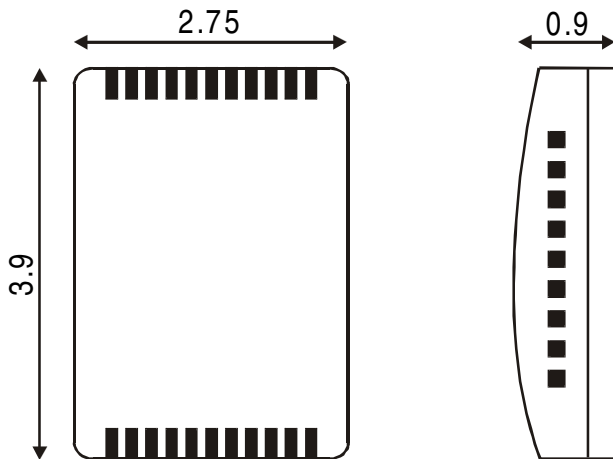
MHW SERIES - WALL MOUNT

FEATURES

- 1% or 2% ACCURACY HUMIDITY
- HUMIDITY RANGE 10-90%
- MICROPROCESSOR BASED
- OUTPUT: 4-20mA
- POWER SUPPLY 12-28VDC
- TEMP RANGE: -20 TO 70°C
- LINEARITY +/-2%
- EASY WALL MOUNT
- SCREW TERMINALS

OPTIONS

- PT100 TEMPERATURE OUTPUT
- 4-20mA TEMPERATURE OUTPUT



MODEL CODE

MHW - X - (Humidity Range) - (Temp Range)

- H - HUMIDITY
- P - TEMP (Pt100)
- T - TEMP (4-20mA)
- HP - HUMIDITY & TEMP (Pt100)
- HT - HUMIDITY & TEMP (4-20mA)

SPECIFICATIONS - MHW

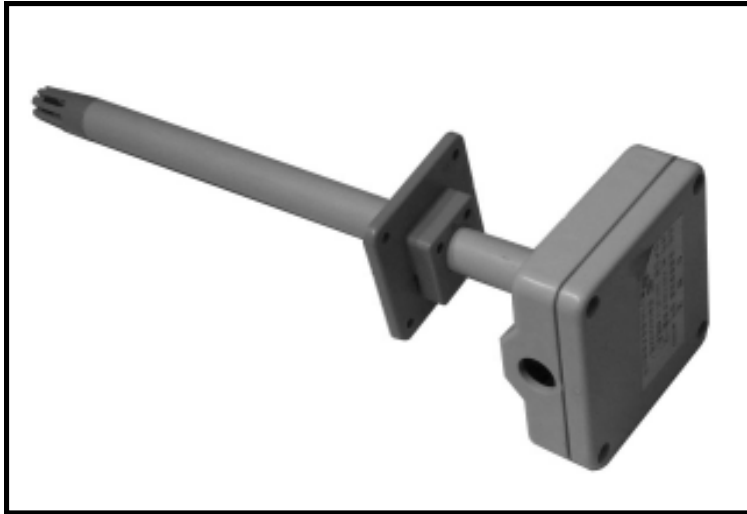
1. ELECTRICAL

ACCURACY - HUMIDITY	1 or 2%
LINEARITY	2%
TEMP DEPENDANCE	0.03%RH / degC
RESPONSE TIME	1.5min from 10 to 90%
OUTPUT (HUMIDITY)	4-20mA 2-WIRE
OUTPUT (TEMP)	PT100 or 4-20mA 2WIRE
ACCURACY - TEMP	0.5%
LOAD	500ohms - 24VDC
POWER SUPPLY	12-28VDC

2. PHYSICAL

CASE MATERIAL	PVC
MECH MOUNTING	SCREW
PROTECTION	SPLASH RESISTANT
WORKING TEMP	-20 to 70degC

**HUMIDITY / TEMPERATURE TRANSMITTER
- DUCT MOUNT -**



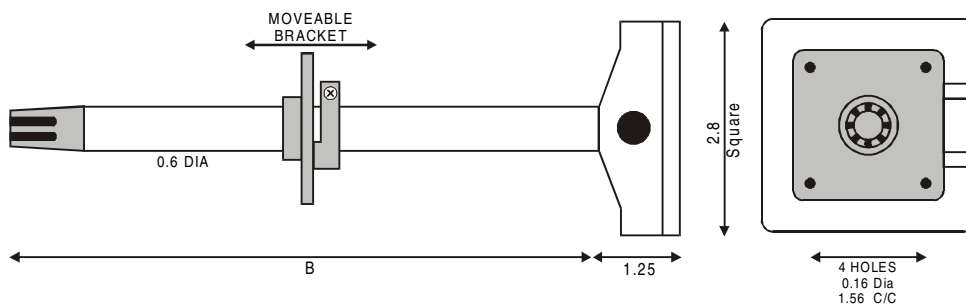
MHD SERIES - DUCT MOUNT

FEATURES

- 1% or 2% ACCURACY HUMIDITY
- HUMIDITY RANGE 10-90%
- MICROPROCESSOR BASED
- OUTPUT : 4-20mA
- POWER SUPPLY 12-28VDC
- TEMP RANGE : -20 TO 70°C
- LINEARITY +/-2%
- EASY WALL MOUNT
- SCREW TERMINALS

OPTIONS

- PT100 TEMPERATURE OUTPUT
- 4-20mA TEMPERATURE OUTPUT



MODEL CODE

MHD - X - (Humidity Range) - (Temp Range) - (B Length - ft)

- H - HUMIDITY
- P - TEMP (Pt100)
- T - TEMP (4-20mA)
- HP - HUMIDITY & TEMP (Pt100)
- HT - HUMIDITY & TEMP (4-20mA)

SPECIFICATIONS - MHD

1. ELECTRICAL

ACCURACY - HUMIDITY	1 or 2%
LINEARITY	2%
TEMP DEPENDANCE	0.03%RH / degC
RESPONSE TIME	1.5min from 10 to 90%
OUTPUT (HUMIDITY)	4-20mA 2-WIRE
OUTPUT (TEMP)	PT100 or 4-20mA 2WIRE
ACCURACY - TEMP	0.5%
LOAD	500ohms - 24VDC
POWER SUPPLY	12-28VDC

2. PHYSICAL

CASE MATERIAL	PVC
MECH MOUNTING	SCREW
PROTECTION	SPLASH RESISTANT
WORKING TEMP	-20 to 70degC

**HUMIDITY / TEMPERATURE TRANSMITTER
- WIRE LEAD -**



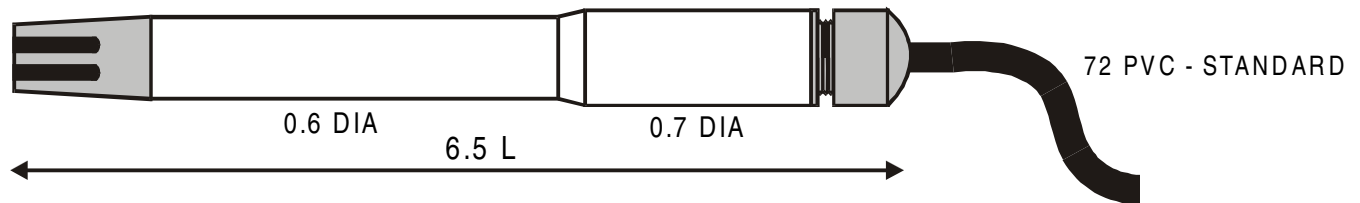
MHL SERIES - WIRE LEAD

FEATURES

- 1% or 2% ACCURACY HUMIDITY
- HUMIDITY RANGE 10-90%
- MICROPROCESSOR BASED
- OUTPUT: 4-20mA
- POWER SUPPLY 12-28VDC
- TEMP RANGE: -20 TO 70°C
- LINEARITY +/-2%
- EASY WALL MOUNT
- SCREW TERMINALS

OPTIONS

- PT100 TEMPERATURE OUTPUT
- 4-20mA TEMPERATURE OUTPUT



MODEL CODE

MHL - X - (Humidity Range) - (Temp Range) - (Lead Length - ft)

- H - HUMIDITY
- P - TEMP (Pt100)
- T - TEMP (4-20mA)
- HP - HUMIDITY & TEMP (Pt100)
- HT - HUMIDITY & TEMP (4-20mA)

SPECIFICATIONS - MHL

1. ELECTRICAL

ACCURACY - HUMIDITY	1 or 2%
LINEARITY	2%
TEMP DEPENDANCE	0.03%RH / degC
RESPONSE TIME	1.5min from 10 to 90%
OUTPUT (HUMIDITY)	4-20mA 2-WIRE
OUTPUT (TEMP)	PT100 or 4-20mA 2WIRE
ACCURACY - TEMP	0.5%
LOAD	500ohms - 24VDC
POWER SUPPLY	12-28VDC

2. PHYSICAL

CASE MATERIAL	PVC
MECH MOUNTING	SCREW
PROTECTION	SPLASH RESISTANT
WORKING TEMP	-20 to 70degC