

1 and 2 CHANNEL DATALOGGER



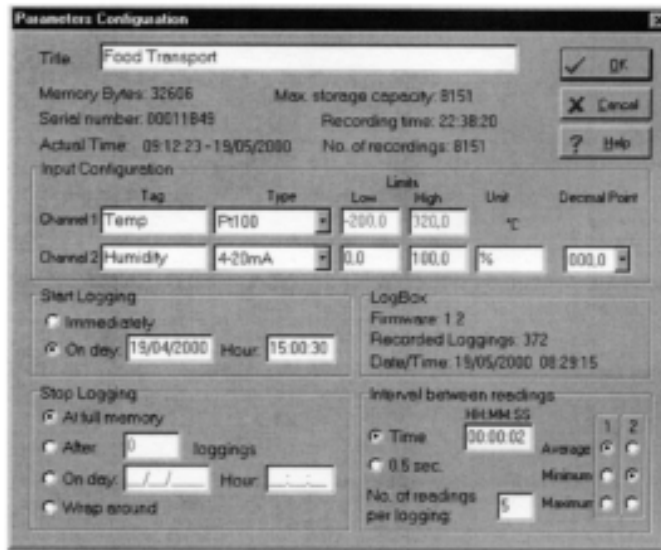
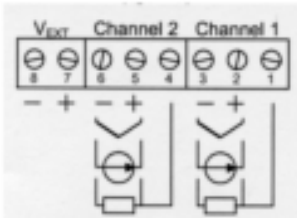
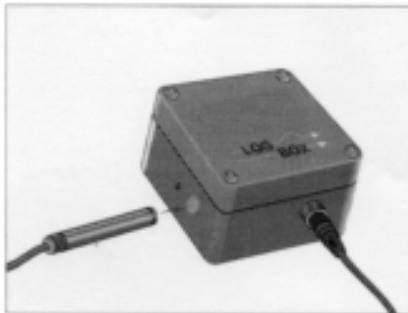
STANDARD

1 or 2 CHANNEL
 INPUTS : T/C J,K,T, Pt100, mA, mV,
 HUMIDITY, DIGITAL
 CAPACITY 16000 READINGS
 IR PROBE PC DOWNLOAD (Rs232)
 REAL TIME CLOCK
 PROGRAMMABLE
 Start, Stop, Frequency, Wrap around,
 Sensor, Range
 MAX, MIN, AVG READINGS
 BATTERY LIFE - >5yrs
 IP65

OPTIONS

INPUT - 0-5VDC, 0-10VDC
 CAPACITY 32, 64K READINGS
 PALM PILOT DOWNLOADING

This self contained logger accepts several analog and digital industrial sensor inputs and accurately records the measurements in non-volatile memory. Setup and retrieval is done in a PC via an infrared wand through the use of LOGCHART, a Windows compatible software which plots and prints, lists loggings and exports data to spreadsheets. Special math functions can be programmed.



SPECIFICATIONS - LOGBOX

1. INPUT (CAN BE MIXED INPUT)

Temperature J, K, T, E, B, R, S, pt100, 4-20mA, 0-50mV
 humidity sensor, Digital input
 Range User specified
 Accuracy T/C +/-1C, pt100 & 4-20mA +/-0.15%

2. RECORDING

Recording 0.5s to 1month
 Data Capacity 8k , 16k or 32k

3. DOWNLOAD

INTERFACE Rs232 - irda wand
 DATA TRANSFER 8s FOR 8K Reading

4. SOFTWARE

PROGRAM LOGCHART
 WINDOWS 95, 98, NT
 GRAPHICAL PROFILE - LIST, GRAPH, TEXT EXPORT
 Recording 0.5s to 1month

5. POWER

Rating Battery 3.6V Lithium
 BATTERY LIFE Sample interval 30s - 1245days
 Sample interval 10s - 840days
 Sample interval 1s - 150days

6. ENVIRONMENTAL & PHYSICAL

Operating Temp -40 to 70°C
 Humidity 0-100%
 Instrument Size 58mmW x 64mmH x 35mmD