

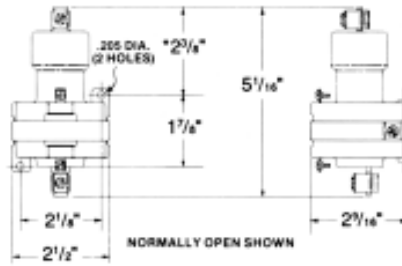
# 100-AMP CONTACTORS



NORMALLY OPEN UNIT



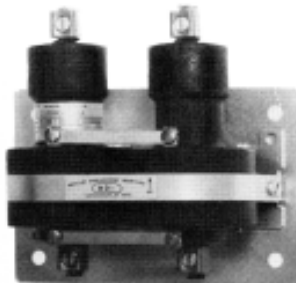
NORMALLY CLOSED UNIT



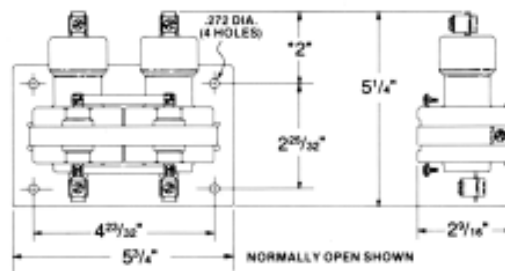
\*THIS DIMENSION IS 1 1/2" FOR NORMALLY CLOSED SINGLE POLE UNITS.

## TYPICAL SPECIFICATIONS

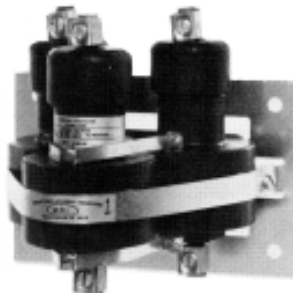
- ON NORMALLY OPEN UNITS:  
OPERATE TIME: 50 milliseconds  
RELEASE TIME: 80 milliseconds
- ON NORMALLY CLOSED UNITS:  
OPERATE TIME: 45 milliseconds  
RELEASE TIME: 60 milliseconds
- CONTACT RESISTANCE: .001 ohm\*
- DIELECTRIC WITHSTAND: 2500VAC RMS
- LONGEVITY: MILLIONS OF CYCLES
- TEMPERATURE RANGE: -35°C TO 85°C
- COIL TERMINALS: #6 BINDING HEAD SCREWS
- LOAD TERMINALS: PRESSURE CONNECTORS. STANDARD ACCEPTS A.W.G. #2 to #12. FOR A.W.G. #1 to #8, ADD SUFFIX -5 to CATALOG NUMBER (i.e. 100NO-120A-5)
- RATINGS: Derate over 240VAC Res. See Page 10 for Contacts. See Page 11 for Coil Data.
- TO ORDER SEE PAGE 4.
- FOR UL RATINGS SEE LOAD CHART. PAGE 10



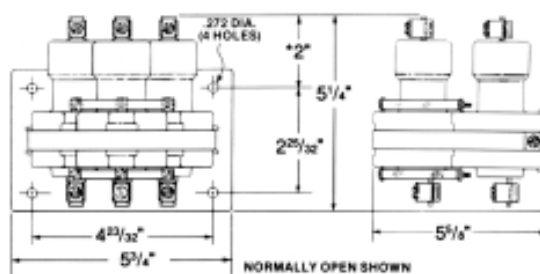
TWO POLE NORMALLY OPEN



\*THIS DIMENSION IS 1 1/2" ON NORMALLY CLOSED TWO POLE UNITS.



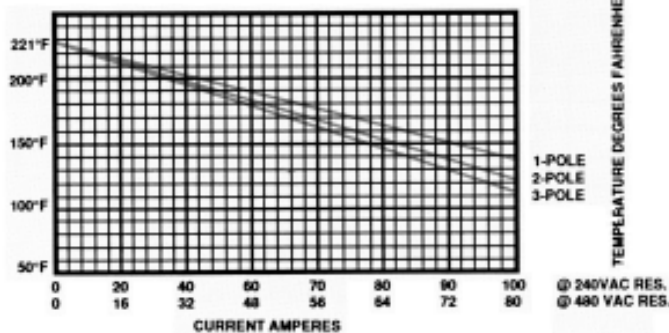
THREE POLE NORMALLY OPEN



\*THIS DIMENSION IS 1 1/2" ON NORMALLY CLOSED THREE POLE UNITS.

AFTER CYC

100-AMP NORMALLY OPEN LOAD DE-RATING DUE TO AMBIENT TEMPERATURE



100-AMP NORMALLY CLOSED LOAD DE-RATING DUE TO AMBIENT TEMPERATURE

